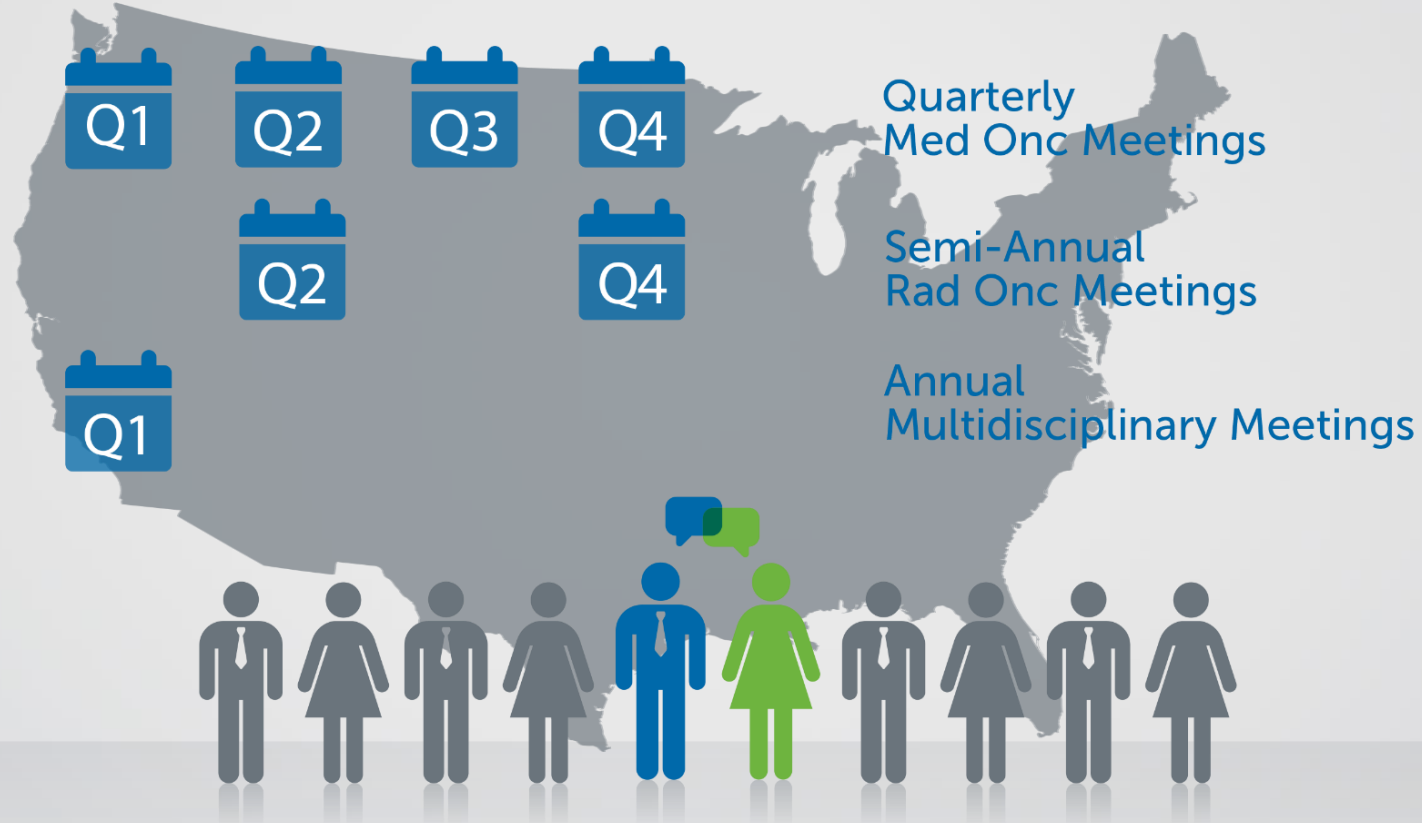


Who develops the Via Pathways?



Committee Membership open to **ALL** Via Network providers

Via's Guiding Philosophies

1

Standardization leads to better outcomes

Standardizing to the Committee's best thinking, even when high levels of evidence are not available, is better than what will otherwise be unstructured variability

2

Clinical pathways should cover the common patient scenarios but not designed to address every patient

3

Clinically proven personalized medicine should be incorporated for actionable biomarkers

4

Clinical pathways should advance science and research

Clinical trials are incorporated for each customer, prioritized ahead of SOC and deemed On Pathway

Pathway Determinants

01 Efficacy

If there is a clear choice, this is the pathway

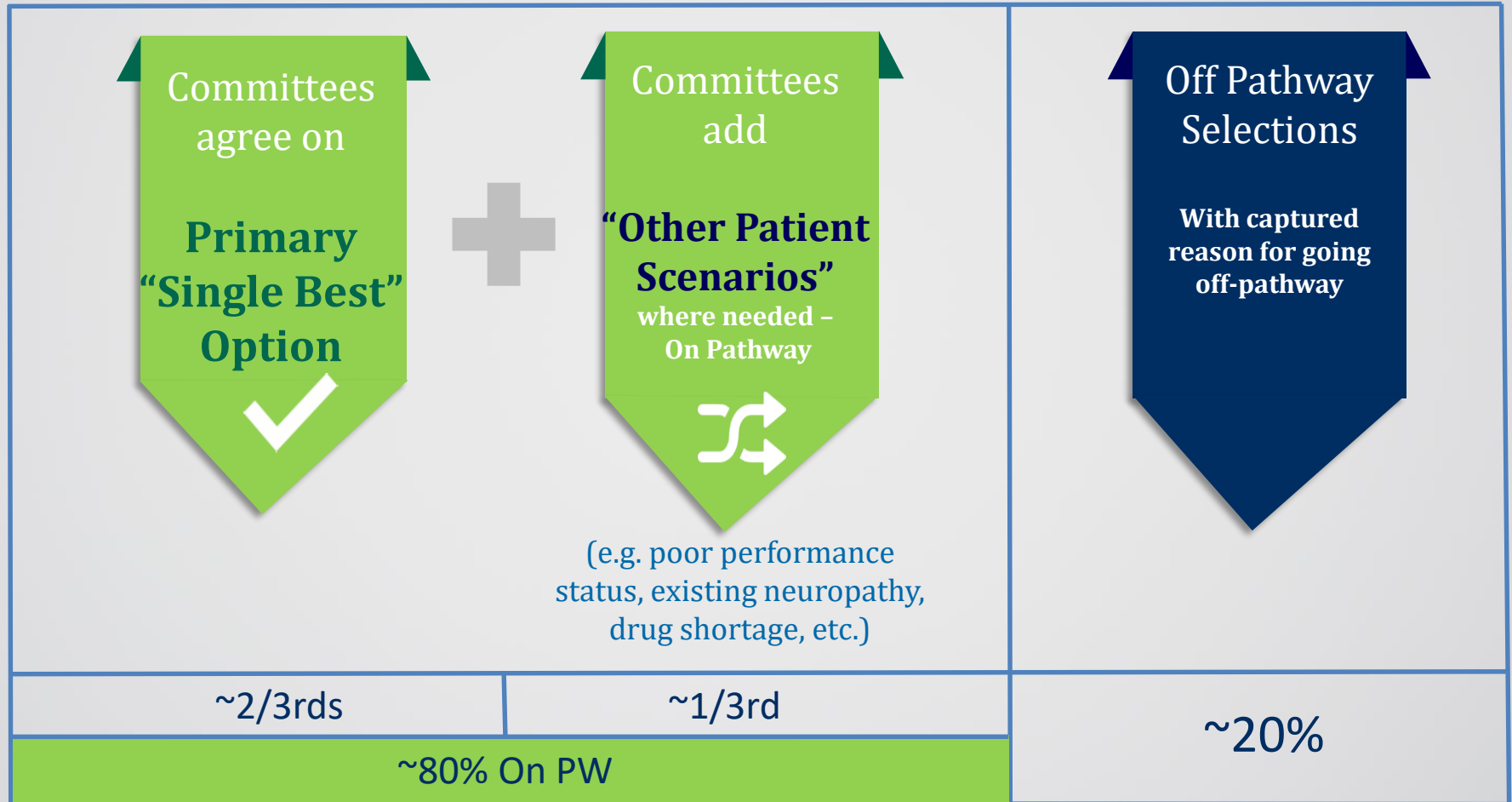
02 Toxicity

If efficacy is comparable, choose the treatment with less toxicities to improve QOL and reduce hospitalization/ED visits

03 Cost

ONLY if efficacy and toxicities are comparable, choose the lowest cost treatment to the payer/patient

Via Pathways Framework



Medical Oncology On Pathway Rates

Disease	On Pathway Rate
Anal Carcinoma	84.0%
Bladder	78.9%
Breast	88.5%
CML	90.9%
Colorectal	83.2%
Gastroesophageal	79.3%
Head and Neck	80.5%
Lymphoma and CLL	77.4%
MDS	85.9%
Melanoma	91.0%
Mesothelioma	72.4%

Disease	On Pathway Rate
Multiple Myeloma	85.9%
Neuro	83.2%
Non-Small Cell Lung	77.6%
Ovarian	70.2%
Pancreatic	87.1%
Prostate	89.0%
Renal Cell	85.2%
Small Cell Lung	79.6%
Testicular	88.6%
Thyroid	74.6%
Uterine	79.5%

Overall On Pathway Rate: **83.2%**